

# CASEE

## Communication Aid Service

### East of England

*Providing an  
Augmentative  
and Alternative  
Communication  
Service to the  
East of England*



CASEE has been commissioned to provide equitable specialist services for children and adults with complex communication needs who live in the East of England.

We aim to assess and provide Augmentative and Alternative Communication (AAC) solutions (for example electronic communication aids with voice output for people without speech) for people that meet the criteria for assessment by a specialised communication hub and to support the establishment, training and development of local AAC services.

Please see the decision chart overleaf re: referral criteria.

We accept referrals from local therapy teams. Local Services should be involved to provide on-going support. Please contact us to discuss referral criteria or to request a referral form.

## CASEE

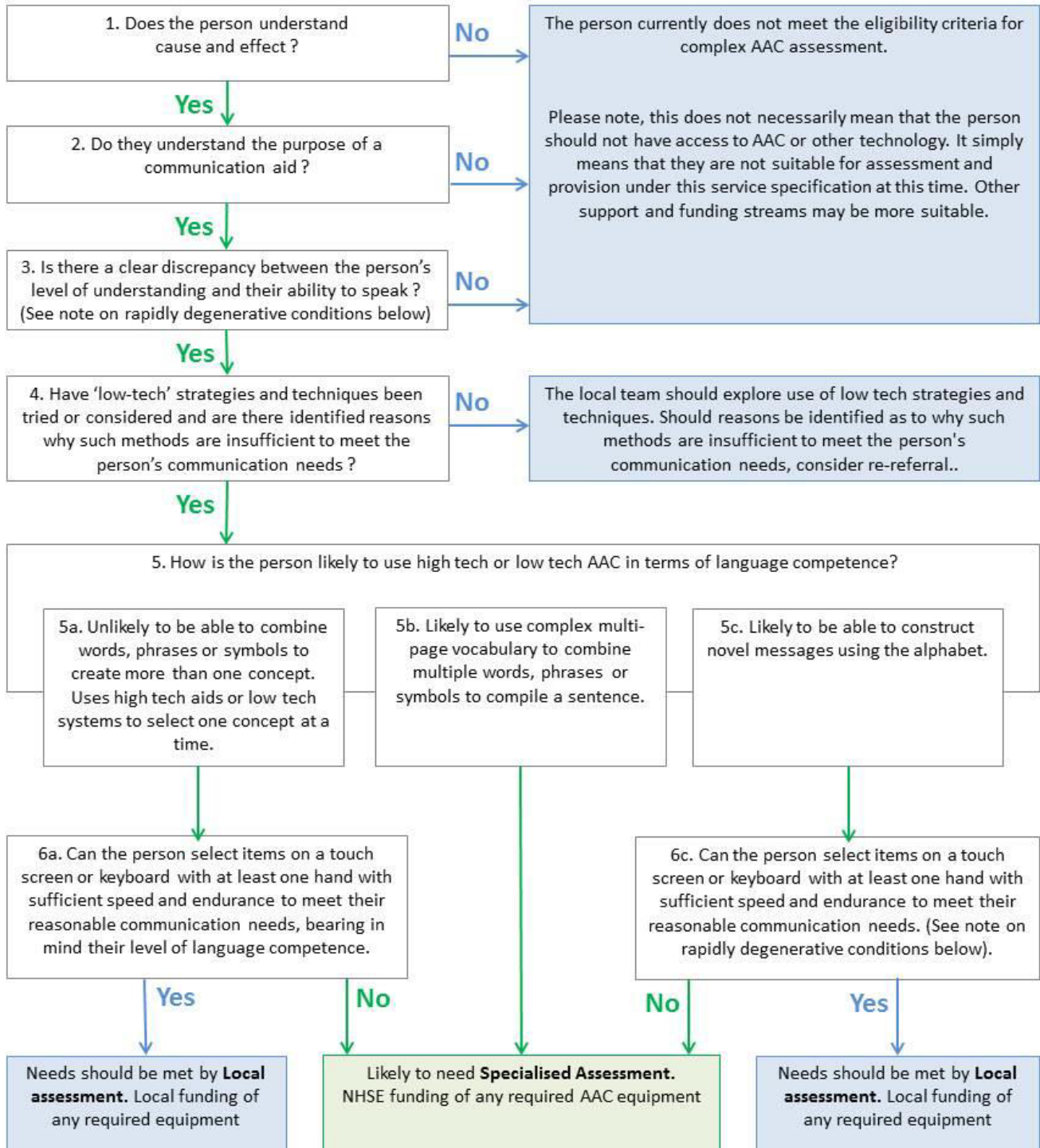
Box 177  
Cambridge University Hospitals  
NHS Foundation trust  
Hills Road  
Cambridge  
CB2 0QQ

Phone: 01223 349 401

E-mail Admin:  
[enquiries.casee@nhs.net](mailto:enquiries.casee@nhs.net)

## Decision chart: Guidance on referral criteria for specialised AAC services

Start here



**NOTE:** People with **rapidly degenerative conditions** can be referred before they meet all the criteria above, particularly in terms of speech and hand function (boxes 3 and 6c). The referrer and specialised AAC service team should be satisfied that they are deteriorating at a rate meaning that they are likely to meet the criteria within the time a communication aid would be provided. Although this time varies a period of 18 weeks is suggested. It is recognised that this is a difficult determination to make, but evidence of how a person has deteriorated prior to the referral should be considered. Decisions will be made on individual clinical circumstances.